



SCRIPTURALISM

* also called Revelational Presuppositionalism

APOLOGETICS

A very brief summary



Argues truth can only be found in the Bible

BIBLE



SCRIPTURE

Argues that scripture is the starting point and ending point for finding truth.

Nothing else is a valid source of truth. Science, reason and history are all invalid sources.

The Bible is self-authenticating.

STARTING POINTS



YOUR FOCUS

These topics are central to your defense of Christianity



Man

People are too damaged from the Fall to find God through reason/science



Theology + Doctrine

Your apologetic starts and ends with Scripture



Abstract Reality

You get into some pretty deep stuff like limits to human knowledge

YOUR ACTIVITY



Activities that convince you Christianity is true



Putting Faith over Reason

The Bible is a book to believe no matter what. It is over human reason.



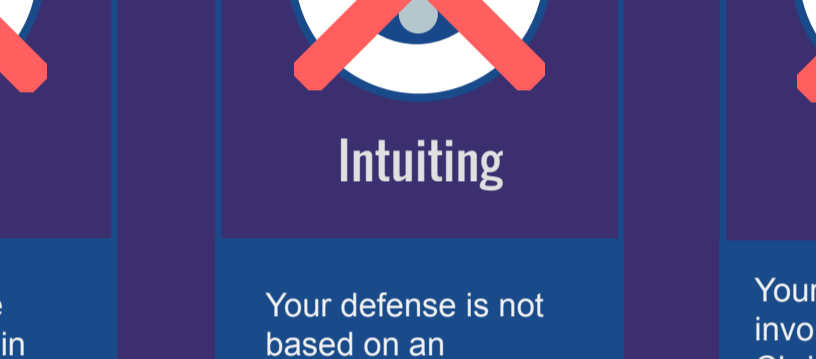
Abstracting

In proving philosophy and science to be invalid, you're abstracting or thinking theoretically.



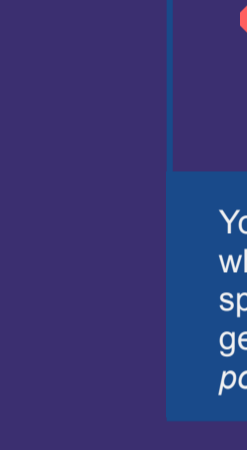
Deducing

Your starting axiom is that the Bible is the Word of God and you deduce all else from there.



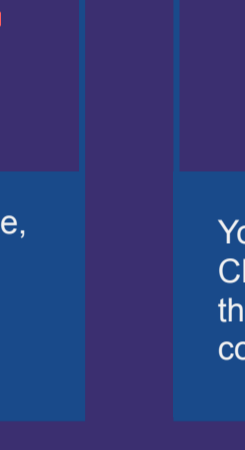
VS

Your belief is not based on these activities



Emoting

You do not place your confidence in emotions, feelings or euphoria.



Intuiting

Your defense is not based on an impression or direct awareness.



Comparing

Your defense does not involve proving Christianity to be the only coherent system among all other beliefs.



Inducing

You distrust science, which moves from specifics to generalizations; a *posteriori*.



Verifying, Confirming

You don't treat Christianity like a theory to be verified, corroborate or tested.

VALUES

Values in Scripturalism



Theoretical Knowledge

You will need much theoretical knowledge to move in this apologetic—it's deep!



VS

Not as valuable



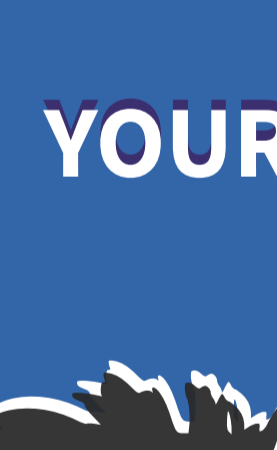
Experience

Experience plays no part in convincing you Christianity is true.



Feelings

You don't base your confidence in Christianity on your feelings.



Empirical Evidence

You are very skeptical at science's ability to lead a person to the truth.



Practical Knowledge

Your apologetic isn't based on practical results. You may or may not be a practical person.

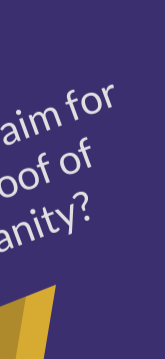
YOUR OPINIONS



Traditional proofs for God are not valid!



We can't/shouldn't use science in apologetics!

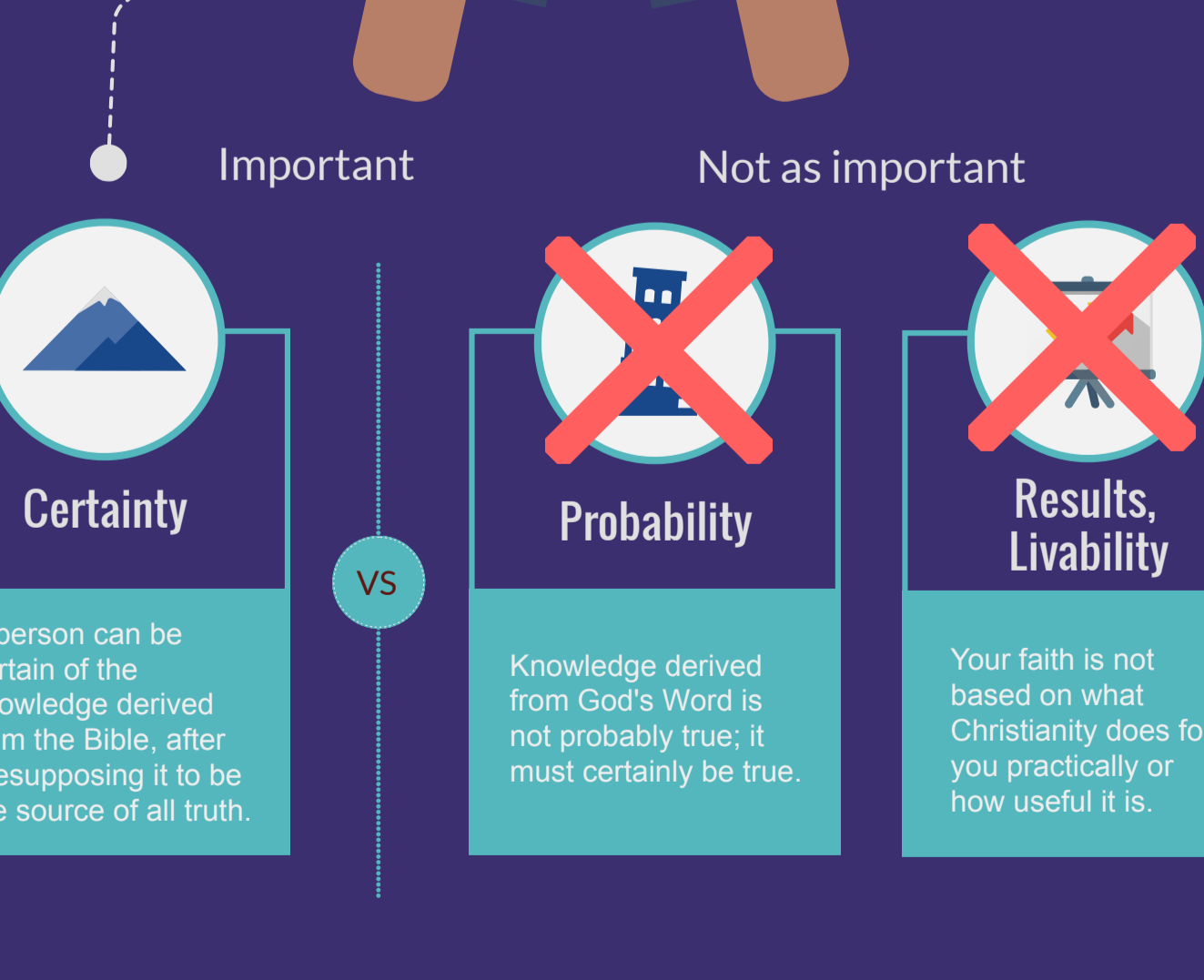


We can't/shouldn't use reason/logic to prove God!



YOUR GOALS

What do you aim for in your proof of Christianity?



Important

Not as important



Certainty

A person can be certain of the knowledge derived from the Bible, after presupposing it to be the source of all truth.



Probability

Knowledge derived from God's Word is not probably true; it must certainly be true.

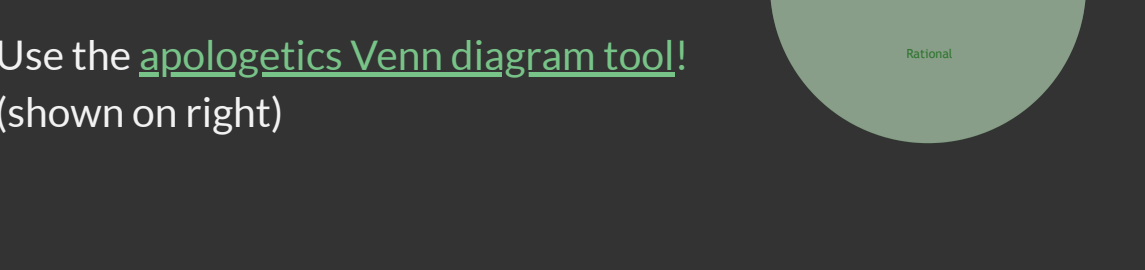
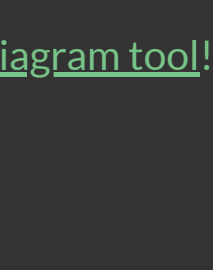


Results, Livability

Your faith is not based on what Christianity does for you practically or how useful it is.

AUDIENCE

Philosophically Minded



© 2020 Shawn Nelson. All rights reserved.



Visit Nelson.ink

- Take the [apologetics survey!](#)
- Get more [apologetics infographics!](#)
- Use the [apologetics Venn diagram tool!](#) (shown on right)

