



RATIONAL APOLOGETICS

A very brief summary



Argues that God exists using philosophy

GOD

COVERS
This apologetic also covers...

▪ **MORAL APOLOGETICS**
Argues God from the existence of moral laws

LOGIC

Argues we cannot avoid using logic.
This becomes a starting point for proving God and knowing reality.

Ideas:
▪ Non-contradiction
▪ Foundationalism

REASON

Proves God using rational arguments.

Ideas:
▪ Cosmological
▪ Teleological
▪ Ontological
▪ Moral arguments

STARTING POINTS

YOUR FOCUS
These topics are central to your defense of Christianity

Physical Universe
The universe points to a First Cause

God
We can really know God because we're like him (analogy)

Abstract Reality
You get into some pretty deep stuff, like the nature of reality and existence itself

Morality / Ethics
Moral laws point to an absolute moral lawgiver

Worldviews
Theism is shown to be superior to all other worldviews

YOUR ACTIVITY

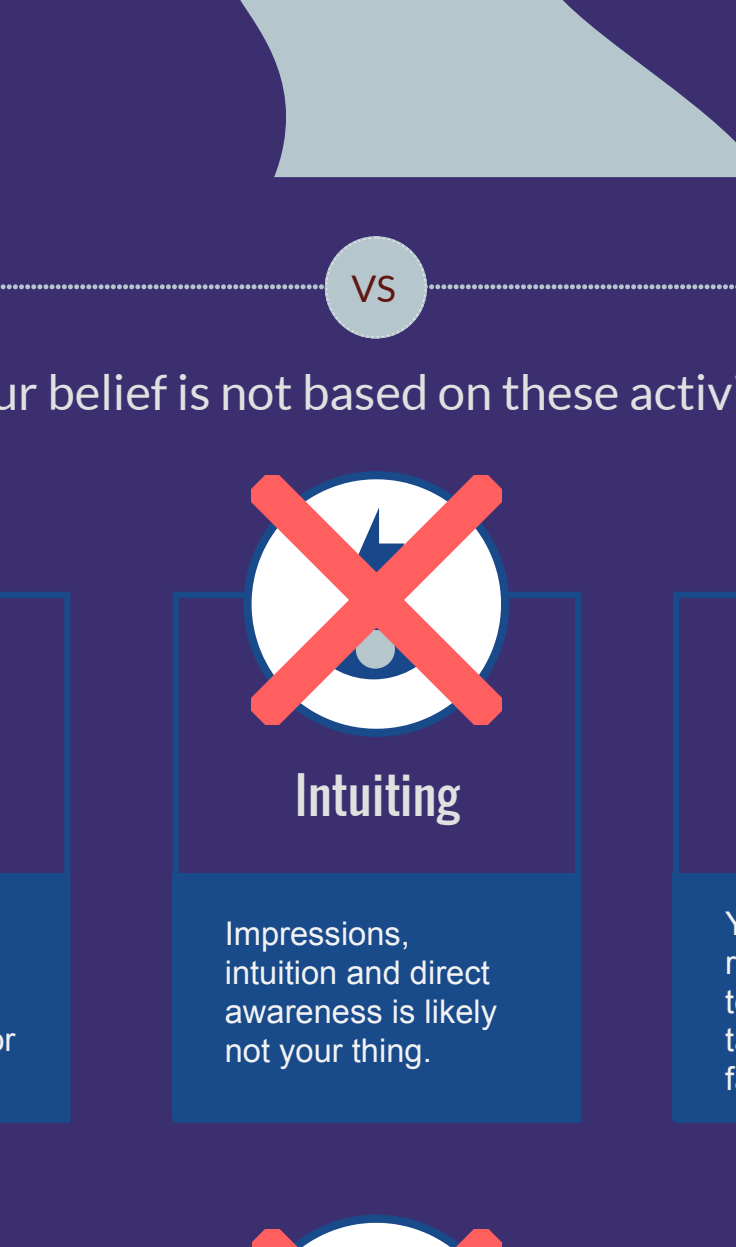
Activities that convince you Christianity is true

Abstracting

Your defense of Christianity involves abstracting or thinking theoretically.

Deducing

You like deductive reasoning. This goes from premise to conclusion; *a priori*.



VS

Your belief is not based on these activities

Emoting

You likely avoid placing your confidence in emotions, feelings or euphoria.

Intuiting

Impressions, intuition and direct awareness is likely not your thing.

Putting Faith over Reason

You see faith and reason working together. You don't take a blind leap of faith.

Inducing

Scientists use inductive reasoning. But you're more of a philosopher.

Comparing

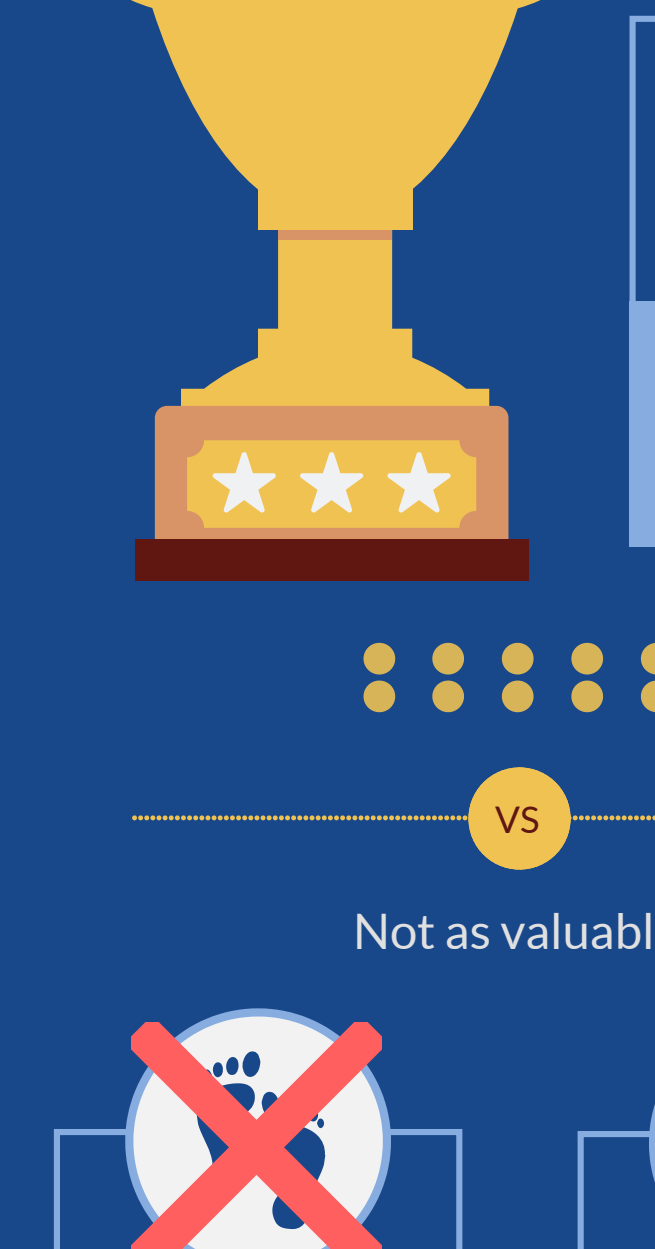
Your defense of the faith is not really based on choosing between the best options.

Verifying, Confirming

You don't really treat Christianity like a theory to be verified, corroborate or tested.

VALUES

Values in rational apologetics



Theoretical Knowledge

You value theoretical knowledge and information (not just practical ideas)

VS

Not as valuable

Experience

Experience plays little part in convincing you Christianity is true.

Feelings

You probably don't base your confidence in Christianity on your feelings.

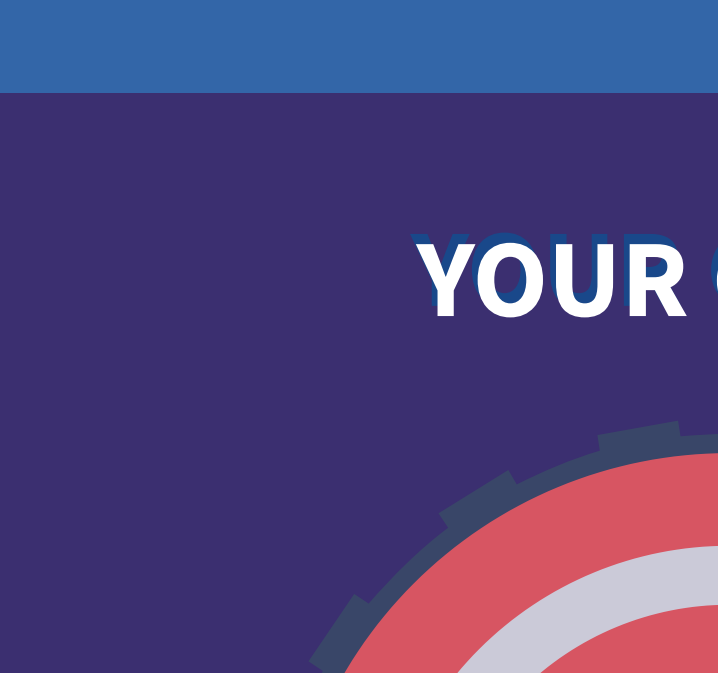
Practical Knowledge

Rational apologetics isn't based on practical results. You may or may not be a practical person.

Empirical Evidence

Rational apologetics is not based on sensory evidence but what we can know from reason.

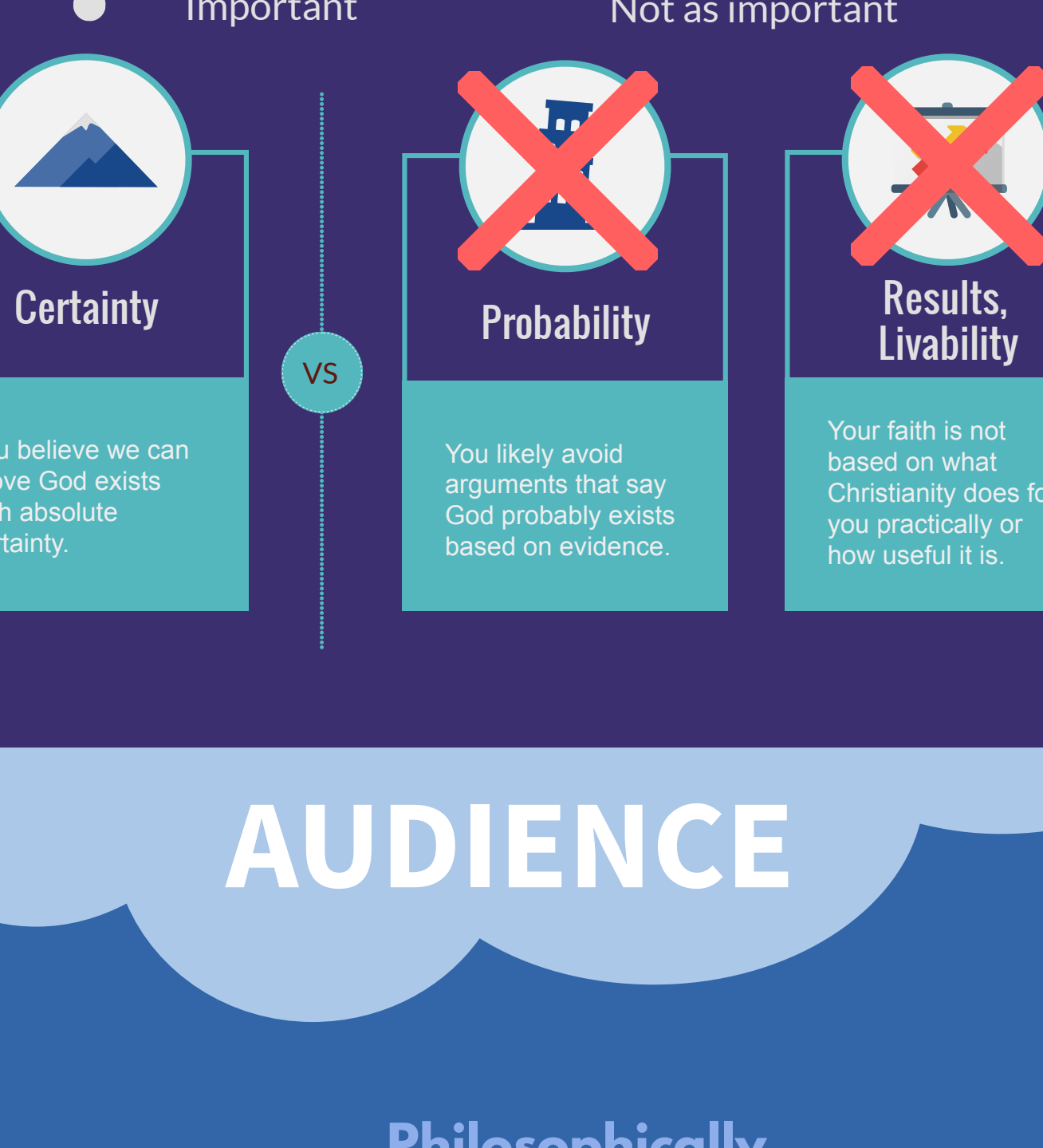
YOUR OPINIONS



▪ **Traditional proofs** for God are valid! ✓

▪ **We can/should use reason/logic** to prove God! ✓

YOUR GOALS



What do you aim for in your proof of Christianity?

Important

Not as important

Certainty

You believe we can prove God exists with absolute certainty.

Probability

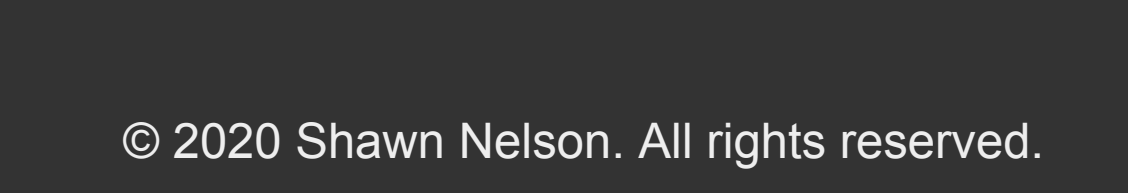
You likely avoid arguments that say God probably exists based on evidence.

Results, Livability

Your faith is not based on what Christianity does for you practically or how useful it is.

AUDIENCE

Philosophically Minded



© 2020 Shawn Nelson. All rights reserved.



Visit Nelson.ink

- Take the [apologetics survey!](#)
- Get more [apologetics infographics!](#)
- Use the [apologetics Venn diagram tool!](#) (shown on right)

