



# CULTURAL APOLOGETICS

A very brief summary



Argues the healthiest countries are those that follow biblical principles

POSITIVE

NEGATIVE

Shows negative effects when a culture departs from a biblical worldview



## STARTING POINTS



### CULTURE

Defends Christianity by showing its positive effects on culture, as well as adverse effects when departing from the Christian worldview.



## YOUR FOCUS

These topics are central to your defense of Christianity



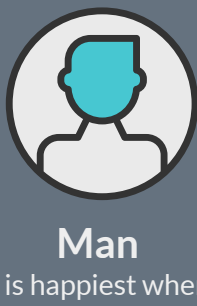
### Changed Lives

People practically change for the better when they follow Jesus



### Morality / Ethics

There is a right and wrong way for man to live



### Worldviews

We see big differences between cultures that follow God and those that don't



### Uniqueness of Jesus/Christianity

The only way to live the best life is to follow Jesus



### Culture

People groups must follow God to thrive as a culture



### Man

Man is happiest when he functions the way God designed him to operate



### Biblical Events

Archaeology confirms the success and fall of biblical peoples

## YOUR ACTIVITY

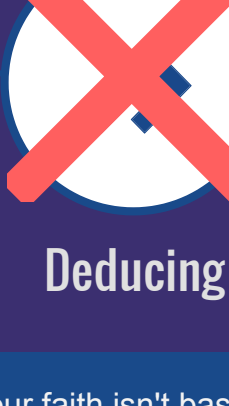


Activities that convince you Christianity is true



### Inducing

You like inductive reasoning. This goes from specifics to generalizations; *a posteriori*.



### Verifying, Confirming

You're able to confirm Christianity produces the best way of life. The proof is in the pudding!



### Comparing

You like to rigorously compare ideas to see which are the best. Christianity produces the best life.



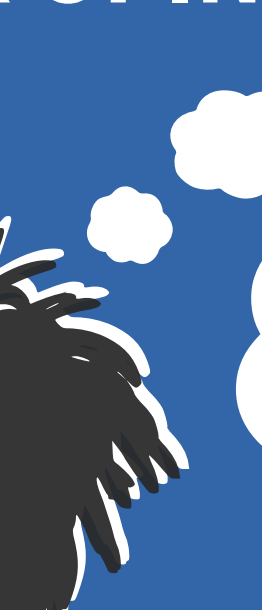
VS

Your belief is not based on these activities



### Abstracting

Your defense of Christianity is not based on abstracting or thinking theoretically.



### Deducing

Your faith isn't based on deductive reasoning. This goes from premise to conclusion; *a priori*.



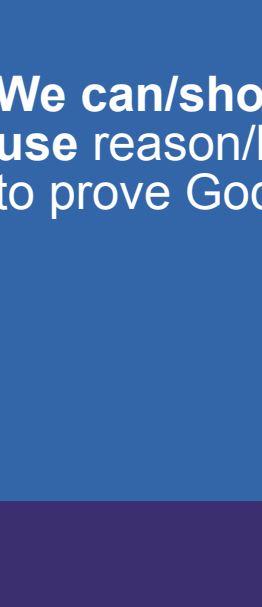
### Emoting

You likely avoid placing your confidence in emotions, feelings or euphoria.



### Intuiting

Your belief is not based on impressions, intuition and direct awareness.

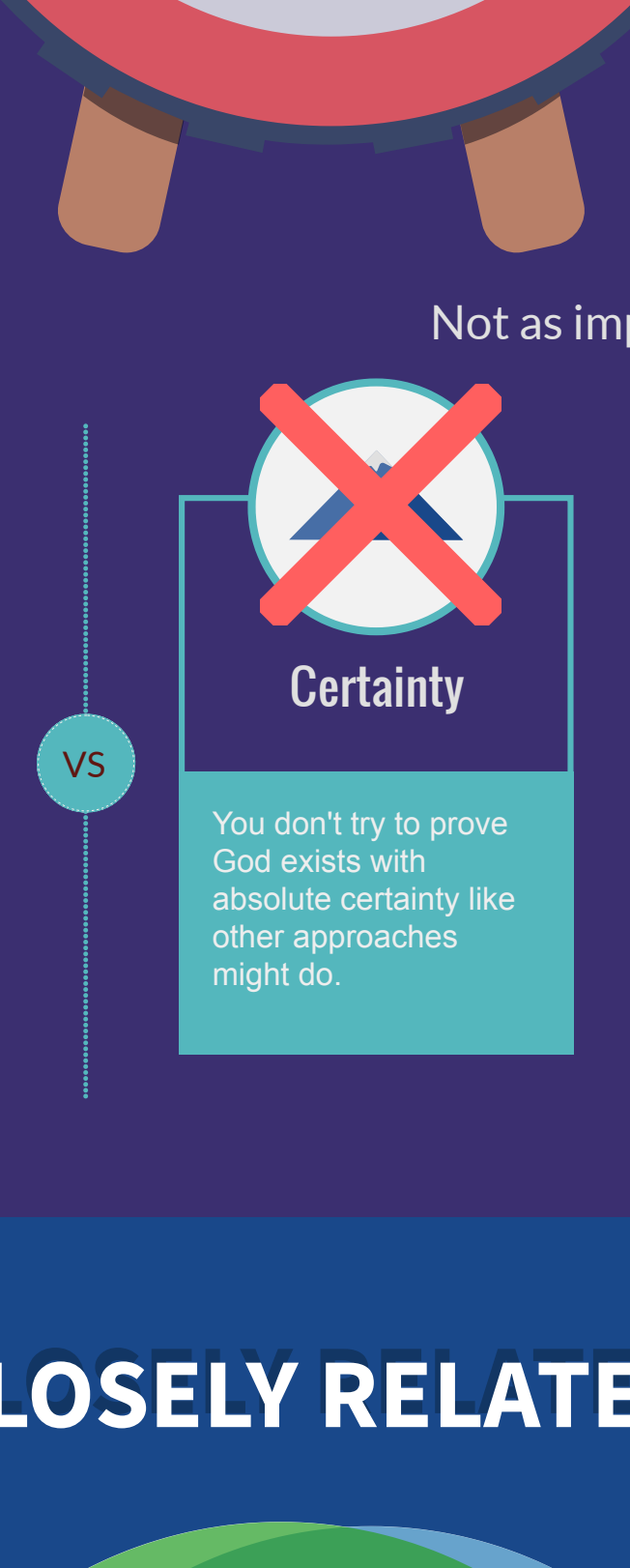


### Putting Faith over Reason

The Bible and history's description of man complement each other.

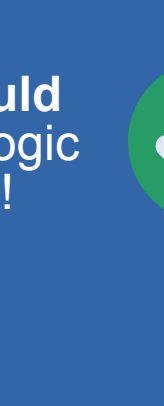
## VALUES

What's valuable in cultural apologetics



### Practical Knowledge

You value practical Christianity. Your faith is something to be tangibly lived out.



### Experience

You can point to times in the past when your walk with God yielded positive results.



### Theoretical Knowledge

You like talking about deeper things like doctrine and the nature of man.



### Empirical Evidence

You like studying anthropology and find it perfectly complements the Bible.

VS

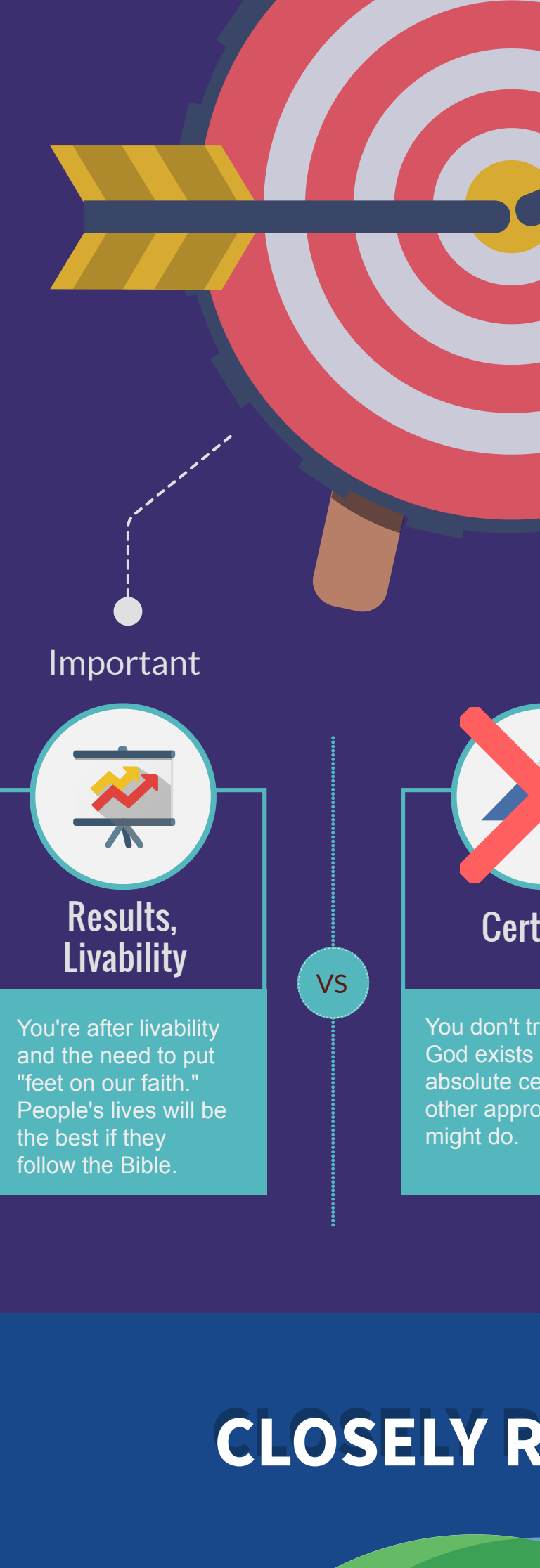
Not as valuable



### Feelings

You do not base your confidence in Christianity on your feelings.

## YOUR OPINIONS



### Traditional proofs for God are valid!



### We can/should use science in apologetics!

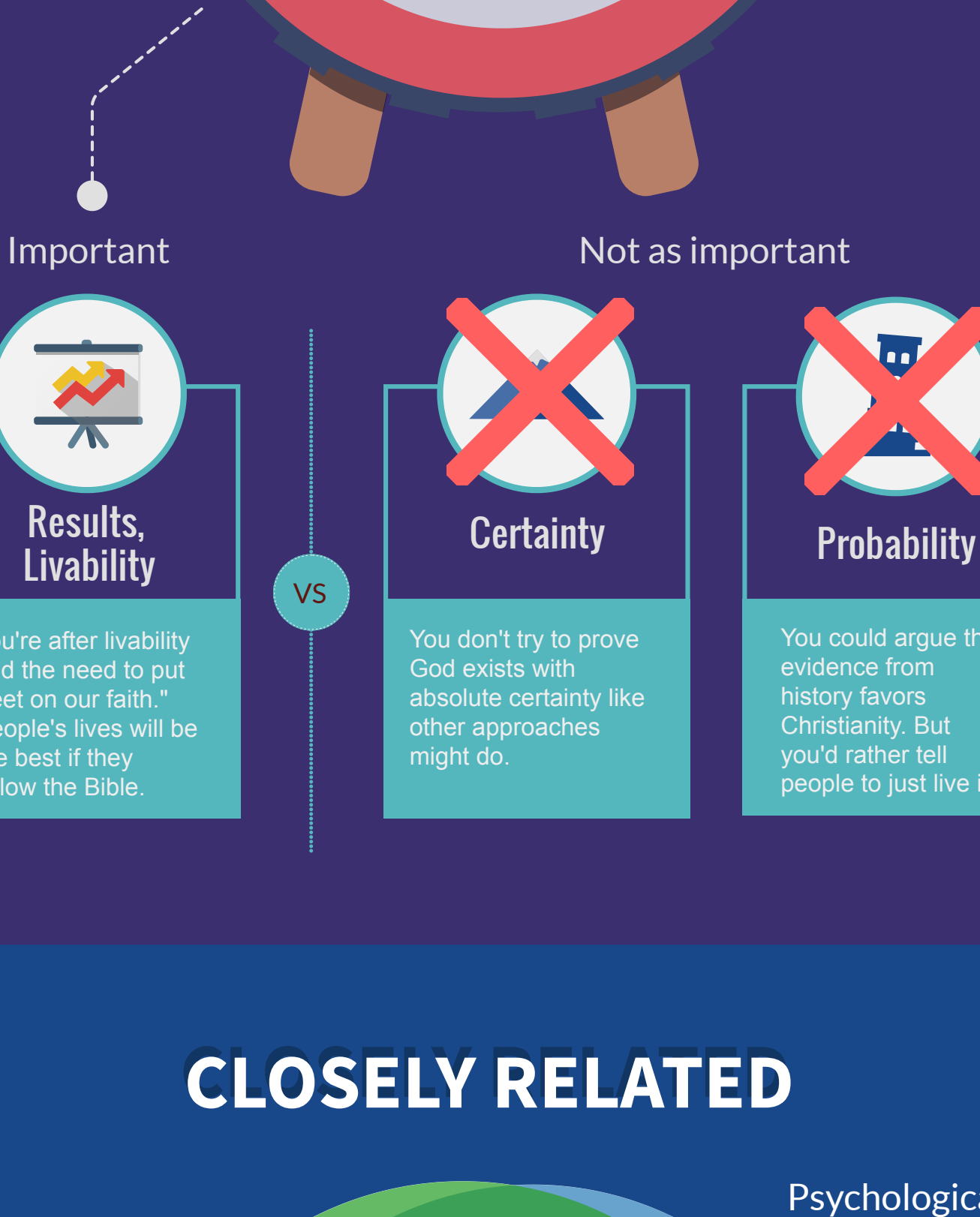


### We can/should use reason/logic to prove God!



## YOUR GOALS

What do you aim for in your proof of Christianity?



Important

Not as important



### Results, Livability

You're after livability and the need to put "feet on our faith." People's lives will be the best if they follow the Bible.



### Certainty

You don't try to prove God exists with absolute certainty like other approaches might do.



### Probability

You could argue that evidence from history favors Christianity. But you'd rather tell people to just live it.

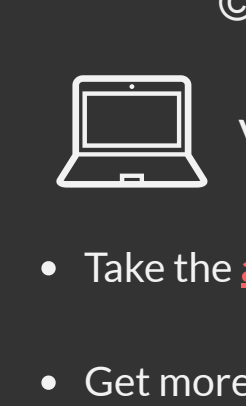
## CLOSELY RELATED

Cultural apologetics has a lot in common with...

PRAGMA

### PRAGMATISM

Argues we should accept what works. Since Christianity is true, it works, and will produce the best life we can have



### PSYCHOLOGICAL APOLOGETICS

Argues Christianity is true because the Bible's description of man is the most accurate one we have

PSYCH

© 2020 Shawn Nelson. All rights reserved.

Visit [Nelson.ink](http://Nelson.ink)

- Take the [apologetics survey!](#)
- Get more [apologetics infographics!](#)
- Use the [apologetics Venn diagram tool!](#) (shown on right)

